

A silhouette of a horse's head and neck is visible behind a wire fence. The background is a dramatic sunset sky with orange and yellow light breaking through dark clouds. The horse is facing left, and its mane is slightly flowing. The fence consists of several horizontal wires and a vertical wooden post on the right side.

RESPONSIBLE NSAID USE

Andrea Frei, BVMS, MS, DACVIM



STEINBECK★PENINSULA
EQUINE CLINICS

Equine NSAID Use

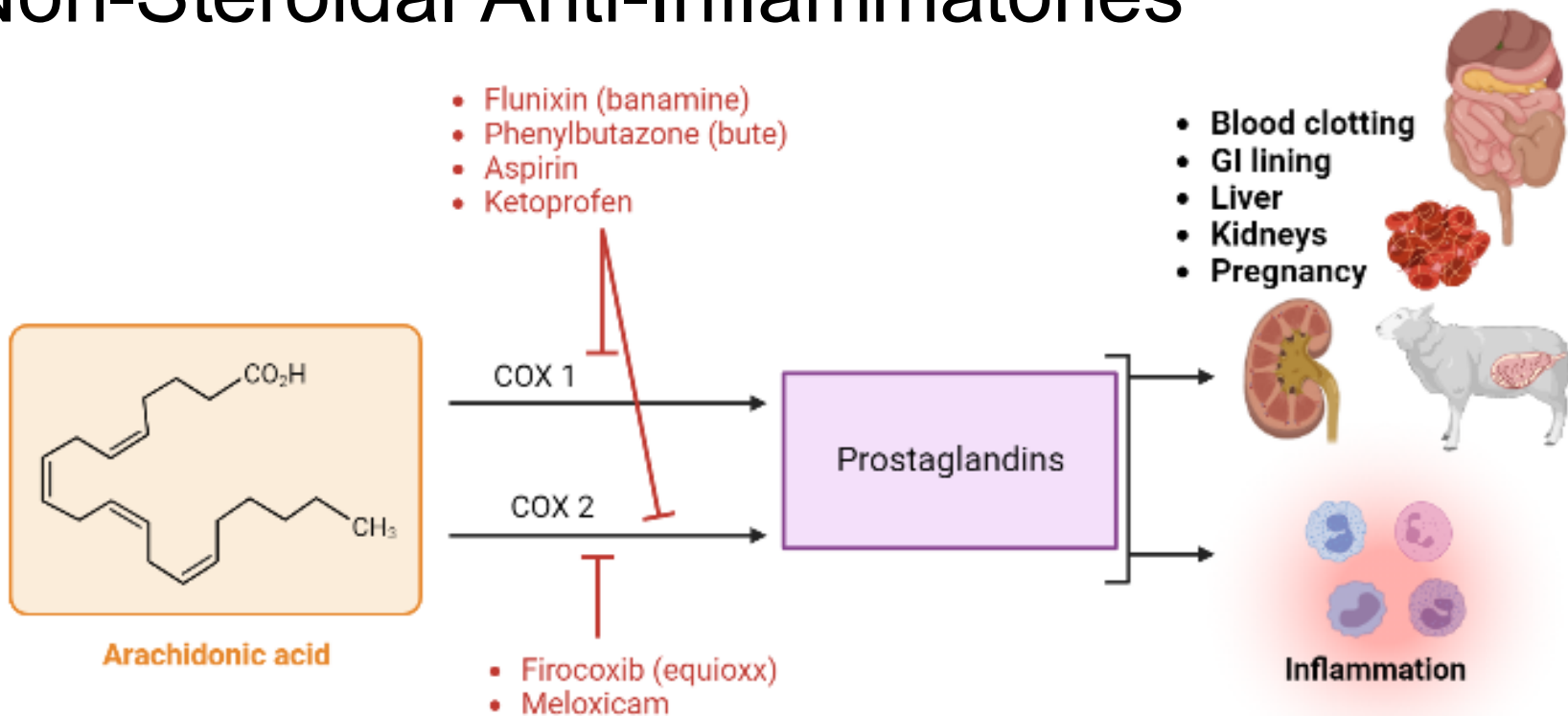
- What are NSAIDs?
- Risks and adverse effects
- Appropriate use
- Key takeaways

Poll: How confident are you in selecting and giving NSAIDs?

- a. Very confident
- b. Somewhat confident
- c. Somewhat unsure
- d. Very unsure
- e. What's an NSAID?



Non-Steroidal Anti-Inflammatories



Major Effects

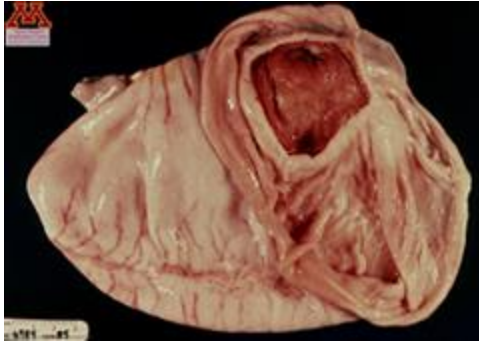
- Action in the central nervous system and peripheral tissues
- Reduces inflammation and stops pain signals = improved comfort
- “Anti-endotoxic”
- Narrow safety margin
- Many unsafe for neonates
- Route given is IMPORTANT



<http://ps://www.horseandman.com/medical/clostridial-myositis-neve-give-a-banamine-shot-into-the-muscle/08/12/20>



<http://beva.onlinelibrary.wiley.com/doi/abs/10.1111/j.2042-3292.2002.tb00174.x>



<http://people.lib.umn.edu/swinedisease/chapter/gastric-ulcer>



<http://www.wellness.com/articles/mish-could-the-new-efficiency-in-box-see/>

STEINBECK★PENINSULA
EQUINE CLINICS

Common Equine NSAIDs

- Flunixin: oral, IV
- Phenylbutazone: oral, IV
- Firocoxib: oral
- Diclofenac: topical

NSAID “cousin”: acetaminophen



Monitoring NSAIDs

- Water Intake
 - Normal = 5 - 10% bodyweight
- Manure character
- Colic signs / inappetence
- Urine color
 - Red, brown = abnormal
 - Gold, yellow = normal

Normal



Abnormal



<https://feedxl.com/horse-manure-score-chart/>

Responsible Administration

- Veterinary direction
 - Appropriate dose & route
 - Controlling high fevers
 - Frequency
 - Effect: in 30-60 minutes (oral)
- Bloodwork
 - Kidneys: BUN and Creatinine
 - Protein markers
 - Hydration status



<https://www.tdln.com/ne/vet/veterinary-com-pounding/>



STEINBECK • PENINSULA
EQUINE CLINICS

When to **Steer Clear** of NSAIDs

- Have not called your vet
- Bute: not for pregnant / lactating mares
- **Doses too close together**
- **Taking other NSAIDs**
- Dehydrated/not drinking
- Diarrhea
- Not eating
- History of kidney disease



<http://ps://www.horseandhound.co.uk/news/new-study-reveals-colic-risk-427376>

Performance Horses

- NSAID use regulated for competing animals
- Welfare is paramount
- United States Equestrian Federation (USEF)
 - Number of NSAIDs using
 - When last given
 - Specific for each drug
- FEI, WPRA, NCHA



Poll: How confident are you in selecting and giving NSAIDs?

- a. Very confident
- b. Somewhat confident
- c. Somewhat unsure
- d. Very unsure
- e. What's an NSAID?





Questions?

CONTACT STEINBECK PENINSULA EQUINE CLINICS

(831) 455-1808 | (650) 854-3162

www.steinbeckpeninsulaequine.com



STEINBECK★PENINSULA
EQUINE CLINICS

References

- Center for Veterinary Medicine (2022). Veterinary Nonsteroidal Anti-Inflammatory Drugs (NSAIDs). *FDA*. [online] Available at: <https://www.fda.gov/animal-veterinary/product-safety-information/veterinary-nonsteroidal-anti-inflammatory-drugs-nsaids> [Accessed 1 Mar. 2023].
- Cornell University College of Veterinary Medicine. (2018). *NSAID (Non-Steroidal Anti-Inflammatory Drug) Medication guide for Animals*. [online] Available at: <https://www.vet.cornell.edu/hospitals/pharmacy/consumer-clinical-care-guidelines-animals/nsaid-non-steroidal-anti-inflammatory-drug-medication-guide-animals> [Accessed 1 Mar. 2023].
- FEI. (2010). *FEI CONGRESS HAILED AS INVALUABLE CONTRIBUTION TO DEBATE ON USE OF NSAIDs IN COMPETITION*. [online] Available at: <https://inside.fei.org/media-updates/fei-congress-hailed-invaluable-contribution-debate-use-nsaids-competition> [Accessed 4 Mar. 2023].
- Flood, J. and Stewart, A.J. (2022). Non-Steroidal Anti-Inflammatory Drugs and Associated Toxicities in Horses. *Animals*, [online] 12(21), p.2939. doi:<https://doi.org/10.3390/ani12212939>.
- Smith, B.P., C, D. and Pusterla, N. (2020). *Large animal internal medicine*. St. Louis, Missouri: Elsevier Mosby, pp.24–32.